

ISSN 1470-5559

LONDIAL 2008

the 12th Workshop on the Semantics and Pragmatics of Dialogue

RR-08-02

JUNE 2008



Programme Chairs

Jonathan Ginzburg

Pat Healey

Local Organisers

Ruth Kempson

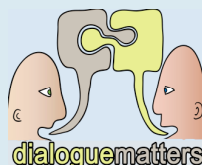
Miriam Bouzouita

Arash Eshghi

Eleni Gregoromichelaki

Yo Sato

KING'S
College
LONDON



Queen Mary
University of London

Proceedings of the 12th Workshop on the
Semantics and Pragmatics of Dialogue
(LONDIAL'08)

Jonathan Ginzburg, Pat Healey and Yo Sato (Eds.)

2-4 June, 2008
London, U.K.

Sponsored by
The Leverhulme Trust Network
Dialogue Matters: Securing Foundations for Dialogue Technology Development

Acknowledgements

Programme Chairs

Jonathan Ginzburg, King's College London
Pat Healey, Queen Mary University of London

Invited Speakers

David Traum, USC Institute for Creative Technologies
Andrzej Wiśniewski, Adam Mickiewicz University
Susan Fussell, Carnegie Mellon University

Programme Committee

Maria Aloni, University of Amsterdam
Nicholas Asher, CNRS, Toulouse & Univ. of Texas
Raffaella Bernardi, Free University of Bolzano
Patrick Blackburn, INRIA, Nancy
Johan Bos, University La Sapienza
Miriam Bouzouita, King's College London
Susan Brennan, Stony Brook
Justine Cassell, Northwestern University
Eve Clark, Stanford University
Paul Dekker, University of Amsterdam
Raquel Fernández, CSLI, Stanford University
Ruth Filik, University of Glasgow
Simon Garrod, University of Glasgow
Eleni Gregoromichelaki, King's College London
Elsi Kaiser, University of Southern California
Ruth Kempson, King's College London
Staffan Larsson, Göteborg University
Alex Lascarides, University of Edinburgh
Ian Lewin, University of Cambridge
Colin Matheson, University of Edinburgh
Gregory Mills, Queen Mary London
Fabio Piansi, ITC-IRST, Trento
Martin Pickering, University of Edinburgh
Manfred Pinkal, University of Saarland
Paul Piwek, Open University
Massimo Poesio, University of Essex
David Schlangen, University of Potsdam
Mark Steedman, University of Edinburgh
Amanda Stent, Stony Brook University
Matthew Stone, Rutgers University
Hannes Rieser, University of Bielefeld

DSiJA Programme Committee

Ellen Gurman Bard, University of Edinburgh
Stefan Kopp, University of Bielefeld
Alex Lascarides, University of Edinburgh
Massimo Poesio, University of Essex
Hannes Rieser, University of Bielefeld
Jan-Peter de Ruiter, MPI for Psycholinguistics, Nijmegen
Mark Steedman, University of Edinburgh
Ipke Wachsmuth, University of Bielefeld

Local Organisers

Ruth Kempson
Miriam Bouzouita
Arash Eshghi
Eleni Gregoromichelaki
Yo Sato

Sponsors

Leverhulme Trust Network *Dialogue Matters: Securing Foundations for Dialogue Technology Development*
Department of Philosophy, King's College London
Department of Computer Science, Queen Mary, University of London

Preface

LonDial08 completes the first one dozen meetings of the Semantics and Pragmatics of Dialogue workshop series (SEMDIAL). It brings SEMDIAL to a city well known for the ability of its underground users to avoid dialogue even in the tightest rush hour crush. The SEMDIAL series premiered in Munich in 1997 (MunDial'97), at the initiative of Anton Benz and Gerhard Jäger. Since then, it has been held in all the European countries that have hosted the FIFA World Cup at least once, and the Netherlands (Twente (Twendial98), Amsterdam (Amstelogue99), Gothenburg (Götalog00), Bielefeld (BiDialog01), Edinburgh (Edilog02), Saarbrücken (DiaBruck03), Barcelona (Catalog04), Nancy (Dialor05), Potsdam (BranDial06), and Decalog (Rovereto07)).

Whereas its initial orientation was linguistic semantics/pragmatics, the focus of SEMDIAL has broadened significantly over the years. It now covers a wide range of topics that concern the development of models of dialogue, ranging from work on the design of artificial conversational agents and human interaction with robots, to psycholinguistic studies and computational modelling of disfluencies, gesture, gaze, and the acquisition of conversational competence by children. SEMDIAL has become the premiere forum for presenting this kind of work. Following an initiative that originated in Decalog, LonDial will feature the launch of a major international journal devoted to the study of dialogue (see the SEMDIAL website for details).

LonDial coincides with the concluding meeting of the Leverhulme Trust Network *Dialogue Matters: Securing Foundations for Dialogue Technology Development*. Dialogue Matters, which has been in existence since summer 2005, is an interdisciplinary network set up to encourage collaboration on the study of dialogue among linguists, psychologists, and computer scientists, from sites in Europe and the U.S. Based in London, Dialogue Matters has hosted five fruitful and fun workshops on topics that include Miscommunication, Language Evolution and Change, Incrementality and Clarification in Dialogue, and Dialogue Dynamics: the Scaling up Challenge.

The programme for LonDial consists of invited presentations by Susan Fussell, David Traum, and Andrzej Wiśniewski, as well as contributed papers, including a special session on *Dialogue Situated in Joint Action*, and posters. These contributions were selected from the 30 submissions we received. Each was reviewed by three experts. From the submissions, 16 were accepted as regular papers for oral presentation (including those in the Special Session), and 8 as posters (of which 7 will be presented). A further 3 short papers were accepted as late breaking submissions to be presented as posters.

Our reviewers performed marvellously, punctually producing many very detailed

and helpful reviews. Thank you to Maria Aloni, Nicholas Asher, Ellen Gurman Bard (organizer of the Special Session), Raffaella Bernardi, Patrick Blackburn Johan Bos, Miriam Bouzouita, Susan Brennan, Justine Cassell, Eve Clark, Paul Dekker, Jan-Peter de Ruiter, Raquel Fernández, Ruth Filik, Simon Garrod, Elsi Kaiser, Ruth Kempson, Stefan Kopp, Staffan Larsson, Alex Lascarides, Ian Lewin, Colin Matheson, Greg Mills, Fabio Pianesi, Martin Pickering, Manfred Pinkal, Paul Piwek, Massimo Poesio, Hannes Rieser, David Schlangen, Mark Steedman, Amanda Stent, Matthew Stone, Ipke Wachsmuth.

LonDial is not receiving financial support from the manufacturer of the eponymous hair care products. We are, however, extremely grateful for: generous financial support from Dialogue Matters, from the Department of Philosophy, King's College, London, and from the Department of Computer Science, Queen Mary University of London; endorsement by the ACL Special Interest Groups SIGdial and SIGsem; and, last but not least, tireless work by Eleni Gregoromichelaki, Miriam Bouzouita, Arash Eshghi and Ruth Kempson, the local organizers.

Jonathan Ginzburg
Pat Healey
Yo Sato

London, June 2008

Contents

I Conference Papers	9
Day 1	
Invited talk: <i>Computational Models of Non-cooperative Dialogue</i>	
David Traum	11
<i>A Grounding Approach to Modelling Tutorial Dialogue Structures</i>	
Mark Buckley and Magdalena Wolska	15
<i>Flexible Dialogue Management and Cost Models</i>	
Ian Lewin	23
Day 2	
Invited talk: <i>Questions, Inferences, and Dialogues</i>	
Andrzej Wiśniewski	31
<i>Commitments, Beliefs and Intentions in Dialogue</i>	
Nicholas Asher and Alex Lascarides	35
<i>Dialogue-Grammar Correspondence in Dynamic Syntax</i>	
Andrew Gargett, Eleni Gregoromichelaki, Christine Howes and Yo Sato	43
<i>User Simulations for Online Adaptation and Knowledge-alignment in Trou-</i>	
<i>bleshooting Dialogue Systems</i>	
Srinivasan Janarthanam and Oliver Lemon	51
Special Session on Dialogue Situated in Joint Action (DSiJA)	
<i>Representing and Using Assembly Plans in Cooperative, Task-Based Human-</i>	
<i>Robot Dialogue</i>	
Mary Ellen Foster and Colin Matheson	59
<i>A Continual Multiagent Planning Approach to Situated Dialogue</i>	
Michael Brenner and Ivana Kruijff-Korbayova	67
<i>Accommodation through Tacit Sensing</i>	
Luciana Benotti	75
<i>What Eye Believe that You Can See: Conversation, gaze coordination and</i>	
<i>visual common ground</i>	
Daniel Richardson, Rick Dale, John Tomlinson and Herbert Clark . .	83
<i>Adapting the Use of Attributes to the Task Environment in Joint Action: re-</i>	
<i>sults and a model</i>	
Markus Guhe and Ellen Gurman Bard	91

Day 3

Invited talk: <i>Cultural Differences in Computer-mediated Communication</i>	
Susan Fussell	99
<i>Can Aristotelian Enthymemes: Decrease the Cognitive Load of a Dialogue System User?</i>	
Ellen Breitholtz and Jessica Villing	101
<i>Leveraging Minimal User Input to Improve Targeted Extraction of Action Items</i>	
Matthew Frampton, Raquel Fernández, Patrick Ehlen, Anish Adukuzhiyil and Stanley Peters	108
<i>What's in a Manner of Speaking? Children's sensitivity to partner-specific referential precedents</i>	
Danielle Matthews, Elena Lieven and Michael Tomasello	116
<i>Who Tunes Accessibility of Referring Expressions in Dialogue</i>	
Ellen Gurman Bard, Robin Hill and Mary Ellen Foster	123
<i>Dimensions of Variation in Disfluency Production in Discourse</i>	
Scott Fraundorf and Duane Watson	131
<i>Timing in Conversation: The anticipation of turn endings</i>	
Lilla Magyari and Jan-Peter de Ruiter	139

II Posters 147

Day 2

<i>Adaptive Natural Language Generation in Dialogue using Reinforcement Learning</i>	
Oliver Lemon	149
<i>Taking Fingerprints of Speech-and-Gesture Ensembles: Approaching Empirical Evidence of Intrapersonal Alignment in Multimodal Communication</i>	
Andy Lücking, Alexander Mehler and Peter Menke	157
<i>Multimodal Reference in Dialogue: Towards a Balanced Corpus</i>	
Paul Piwek, Ielka van der Sluis, Albert Gatt and Adrian Bangerter	165
<i>Aligned Iconic Gesture in Different Strata of MM Route-description</i>	
Hannes Rieser	167

Day 3

<i>Resolving Ambiguous, Implicit and Non-Literal References by Jointly Reasoning over Linguistic and Non-Linguistic Knowledge</i>	
Nick Cassimatis	175
<i>A Word-Probabilistic Interface to Dialogue Modules</i>	
Alex Fang, Weigang Li and Jonathan Webster	183
<i>A Grammar Formalism for Specifying ISU-based Dialogue Systems</i>	
Peter Ljunglöf	191

<i>Spoken Language Understanding in Dialogue Systems, Using a 2-layer Markov Logic Network: improving semantic accuracy</i>	
Ivan V. Meza-Ruiz, Sebastian Riedel and Oliver Lemon	193
<i>Discourse Motivated Constraint Prioritisation For Task-Oriented Multi-Party Dialogue Systems</i>	
Petra-Maria Strauss, Simon Friedmann and Tobias Heinroth	195
<i>Negotiating Spatial Relationships in Dialogue: The role of the addressee</i>	
Thora Tenbrink, Elena Andonova and Kenny Coventry	201
Author Index	209